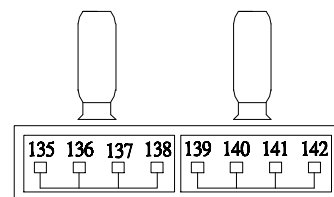
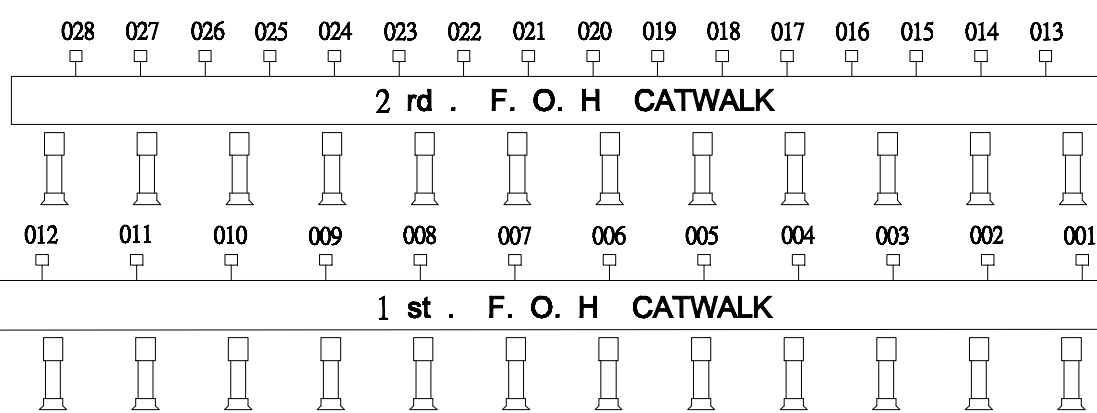
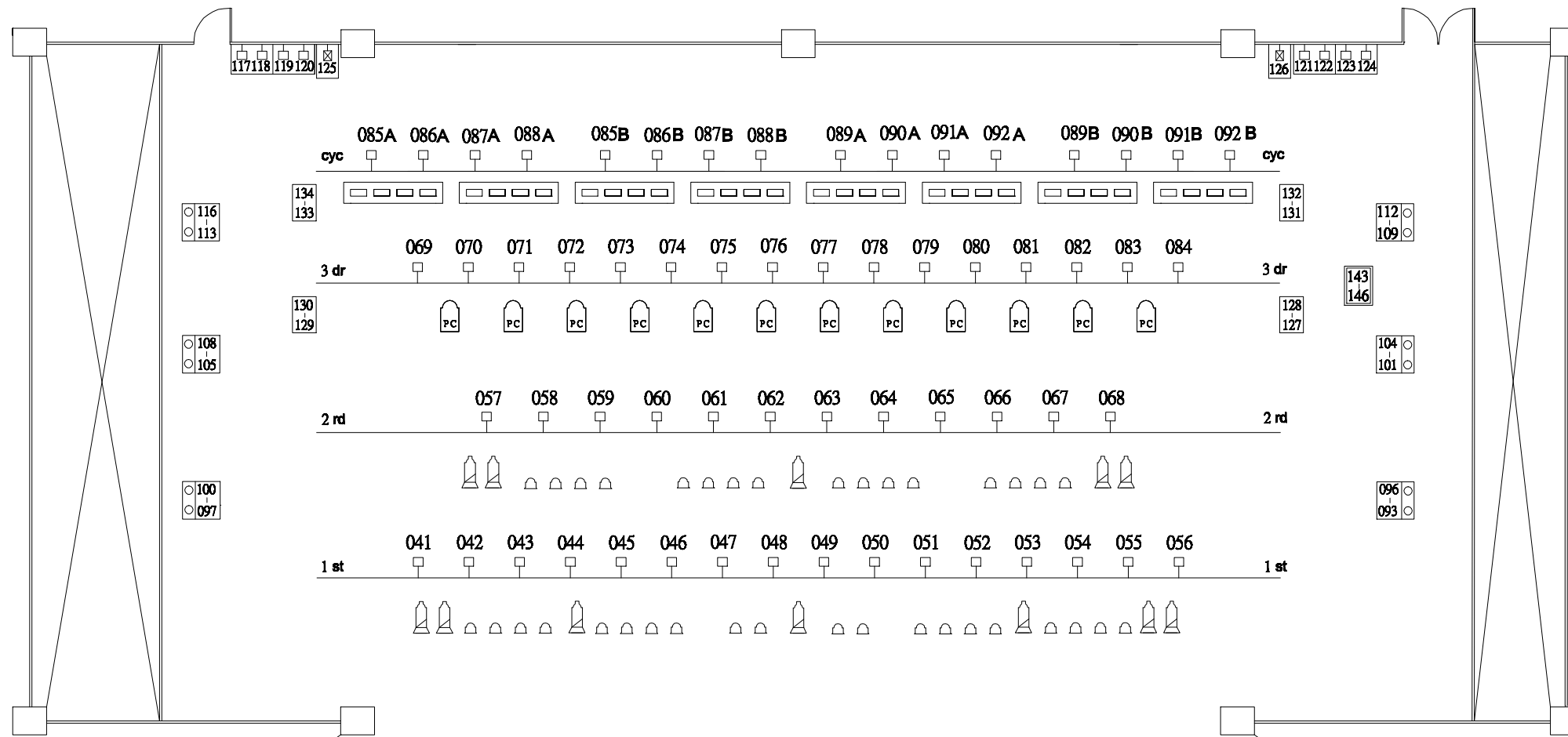


高雄市政府文化局
至善廳燈光設備配置表

項次	規格	數量	備註
1	主電腦燈光控制桌	1台	ETC Elect ment 60/500CH
2	手動電腦燈光副控制桌	1台	ETC - idea 36
3	1KV 不斷電供應器	1台	OPTI DS1000B
4	調光器2.2KW X 2 調光模片	66片	CD -AE 80
5	調光器5.5KW調光模片	14片	CD -AE 80
6	場燈控制面板	2片	ETC 10段式場景面板
7	舞台活動側燈塔	4具	SIDE LIGHT STAND
8	手攜式遙端控制器	1具	i pad
9	15°~30° 750W 變焦聚光燈	12具	廠牌：ETC 包箱用
10	15°~30° 750W 變焦聚光燈	12具	廠牌：ETC 外區1S用
11	15°~30° 750W 變焦聚光燈	12具	廠牌：ETC 外區2S用
12	600W LED 追蹤燈	2具	LYCIAN SUPERSTAR LED
13	26° 750W 定焦聚光燈	8具	廠牌：ETC 側燈用
14	6英寸菲氏鏡片 1 KW 聚光燈	40具	FRESNELITE-3380
15	26° 750W 定焦聚光燈	12具	廠牌：ETC 舞台吊桿用
16	平凸鏡片 1.2KW 聚光燈	12具	CANTATA PC
17	500W x4 天幕燈	8具	廠牌：STRAND LIGHTING

CIRCUIT 143-146 FOR CIRCUITS OF ACOUSTICS SHELL (25A)
 CIRCUIT 135-142 OUTLET BOXES OF CENTRAL ROOM
 CIRCUIT 127-134 FOR OUTLET BOXES ABOVE GRIDE
 CIRCUIT 117-126 FOR OUTLET BOXES OF BACKSTAGE (125-126 5.5KW)
 CIRCUIT 093-116 FOR FLOOR POCKETS OF STAGE LEFT AND RIGHT
 FLOOR POCKETS ARE USING:
 2, 19 - PIN MULTI - CONNECTORS PARALLET
 CIRCUIT 085-092 FOR CYCLORAMA LIGHTING BATTEN (5.5KW)
 CIRCUIT 069-084 FOR 3rd LIGHTING BATTEN (2.2KW)
 CIRCUIT 057-068 FOR 2nd LIGHTING BATTEN (2.2KW)
 CIRCUIT 041-056 FOR 1st LIGHTING BATTEN (2.2KW)
 CIRCUIT 035-040 FOR LIGHT BOOTH SIDE RIGHT (2.2KW)
 CIRCUIT 029-034 FOR LIGHT BOOTH SIDE LEFT (2.2KW)
 CIRCUIT 013-028 FOR 2rd F.O.H . CATWALK (2.2KW)
 CIRCUIT 001-012 FOR 1st F.O.H . CATWALK (2.2KW)

2020.10.20 繪製



CENTER CONTROL ROOM
 CHIH - SHAN HALL LIGHT CIRCUITS